

INDUSTRIAL & COMMERCIAL

CAN OPENER & CRUSHER

MODEL 160 & MODEL 990



DC NORRIS
NORTH AMERICA

INDUSTRIAL & COMMERCIAL

CAN OPENER & CAN CRUSHER

MODEL 160 & MODEL 990

Our popular Model 160 Manual Can Opener is fast and efficient with a capable throughput of 200-300 cans an hour. The Model 990 Can Crusher crushes empty cans to approximately 25% of their original height.

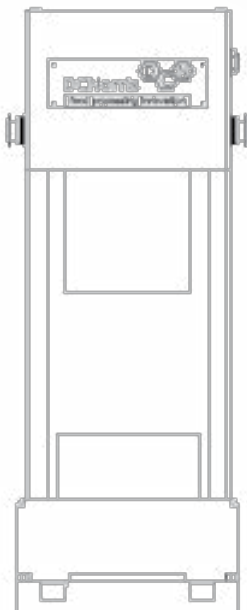


DCN

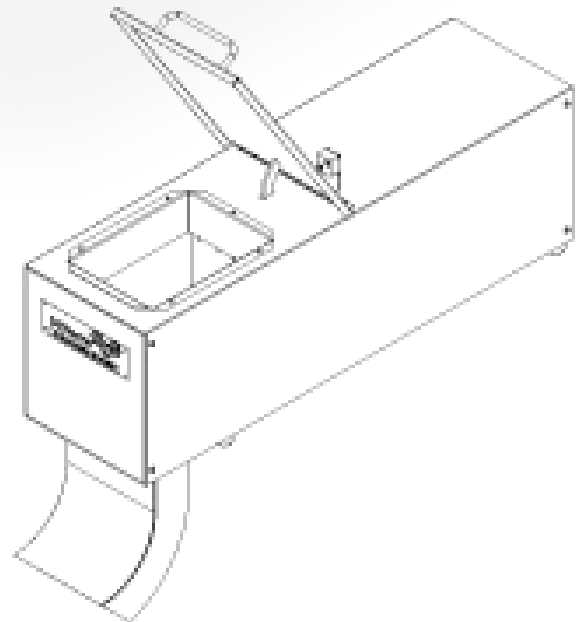
NORTH AMERICA

DC Norris manufactures can opening & crushing equipment that dramatically increases operational efficiency & safety.

Commercial and industrial kitchens alike benefit from the speed and safety of the DC Norris Model 160 Can Opener and Model 990 Can Crusher. Both are easily adaptable for a wide variety of can sizes and shapes, including square.



MODEL 160 CAN OPENER

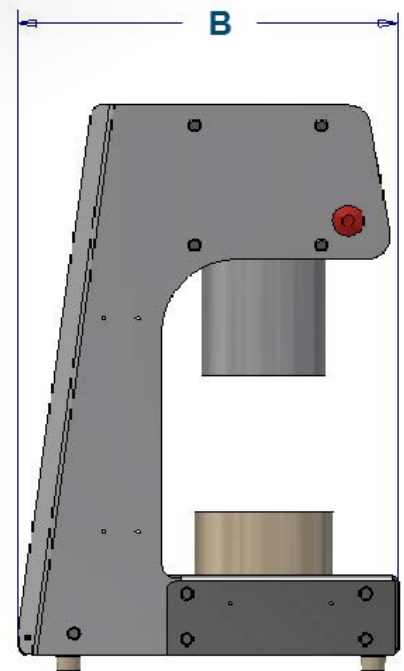
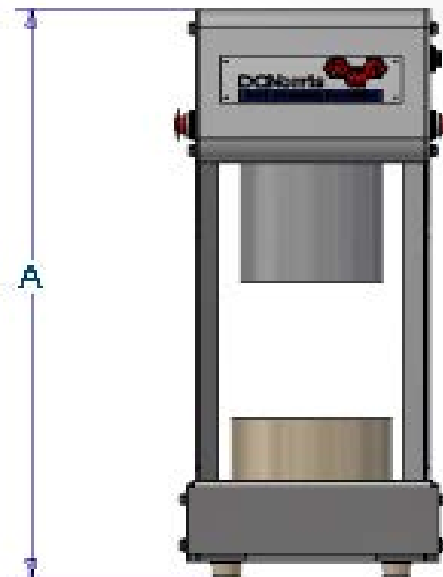
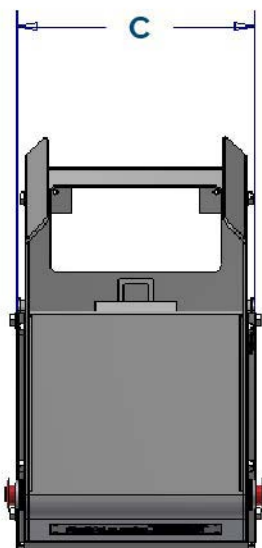


MODEL 990 CAN CRUSHER

MODEL 160 CAN OPENER SPECS

THE MODEL 160 CAN OPENER RANGE

MODEL	CAN DESCRIPTION	WEIGHT	HEIGHT (A)	LENGTH (B)	WIDTH (C)
160	Standard	79.36 lbs	29.17"	19.3"	11.6"
160a	Tall	79.36 lbs	29.17"	19.3"	11.6"
160b	Wide Diameter	79.36 lbs	29.17"	19.3"	11.6"
160c	Tall & Wide Diameter	79.36 lbs	29.17"	19.3"	11.6"



MODEL 160 FEATURES:

SAFE & EFFICIENT

Our original and best-selling design; the Model 160 Semi-Automatic Can-Opener is suitable for most catering applications where fast lid removal and easy size/height changes are required. The Model 160 is pneumatically powered and is fast and efficient, with a capable throughput of 200-300 cans an hour.

The fully enclosed blade removes the can lid without metal slivers in one clean cut, using the two-handed push button. With interchangeable heads and height blocks, the can-opener is adaptable for a wide range of can sizes and shapes. Operation requires compressed air with a pushfit connection.

- Heavy-duty hygienic glass bead blasted stainless steel
- Two handed push button operation via pneumatic logic to protect operator
- Fully enclosed blade
- Safety air cut off if head shroud removed
- No metal slivers
- Interchangeable heads
- Easy & fast height change without the need for tools
- Height block included
- Easy cleaning
- Pneumatically powered

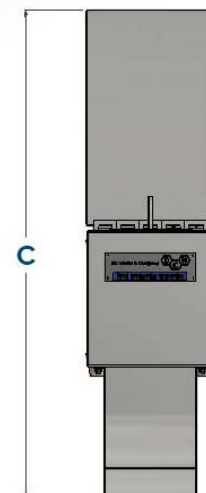
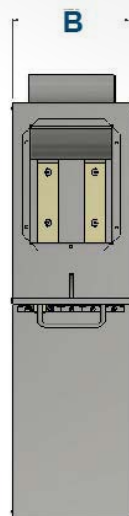
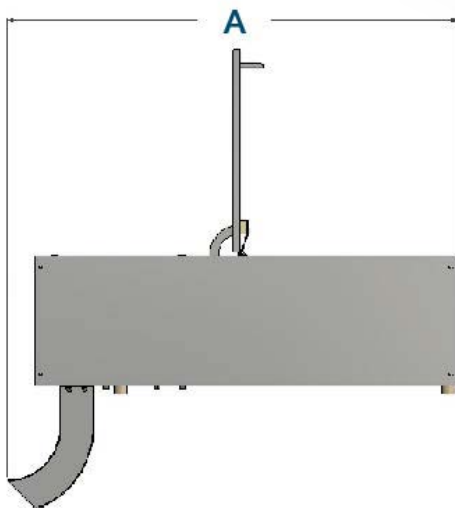
ADDITIONAL OPTIONS

- Support Stand
- Infeed Table
- Can Rinse / Air Blast Water Removal Unit
- Product Chute
- Drop-In Mesh
- Can Crushing System
- Magnetic Lid Removal System



MODEL 990 CAN CRUSHER SPECS

THE MODEL 990 CAN CRUSHER				
MODEL	WEIGHT	HEIGHT W. LID OPEN (A)	WIDTH (B)	LENGTH (C)
990	167.55 lbs	31.6"	8.94"	38.8"



MODEL 990 FEATURES:

TABLE TOP POWER WITH SAFETY FEATURES

The DC Norris Model 990 Can Crusher is a heavy duty table top machine capable of crushing domestic and industrial cans to approximately 20% of their original size. Customers can improve their recycling credentials as well as gaining financial payback from the used cans.

The Can Crusher is pneumatically powered and easy to operate. Simply place the can inside, close the lid and the can is crushed and ejected out of the exit chute, taking just a few seconds. Safety features are built into the machine rendering it inoperative should the lid be lifted.

- Manufactured in stainless steel and food approved plastics
- Capable throughput of 200-300 cans an hour
- Maximum can size - 160 diameter x 260mm high
- Compressed air required for operation
- Easy cleaning
- Pneumatically powered

ADDITIONAL OPTIONS

- Can wash/rinse system
- Can Opener
- Can Crusher Stand



WE'RE HERE TO HELP YOU LEAD THE EVOLVING NORTH AMERICAN FOOD MARKET

The processing equipment manufactured by DC Norris leads the global food production industry. So too, do our teams. Our commitment to partnership with our clients is what truly drives global food cultures forward. Together, we innovate to feed the world the best foods possible and to make continual strides in convenience and accessibility by improving efficiency, lowering cost, and minimizing environmental impact.

DC Norris North America

WWW.DCNORRISNA.COM

231.935.1519
mail@dcnorrisna.com



DC NORRIS
NORTH AMERICA